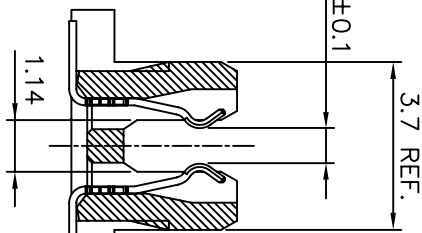
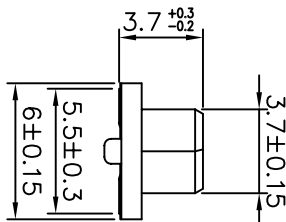
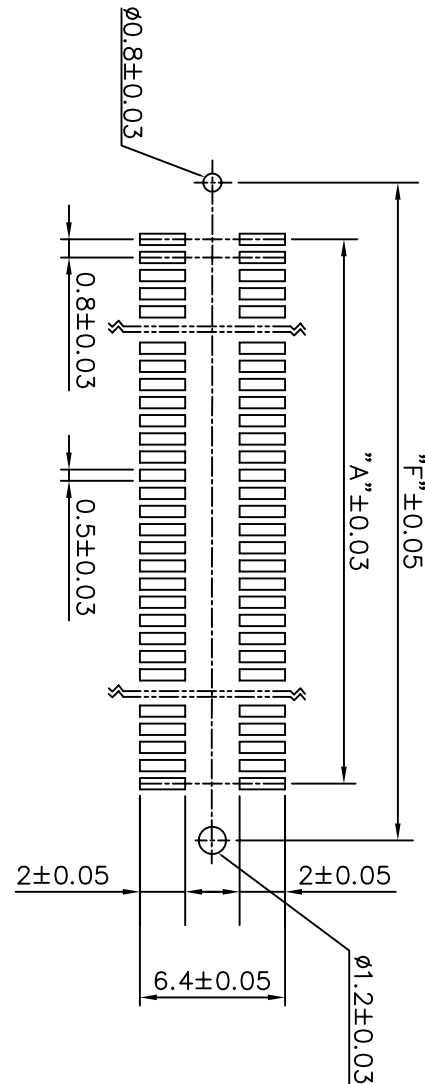
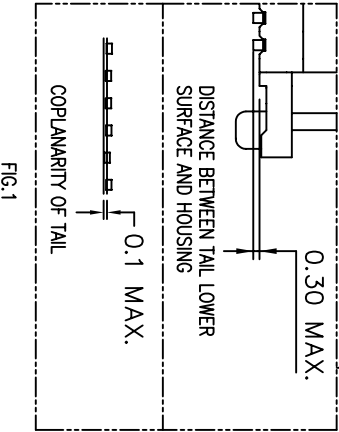
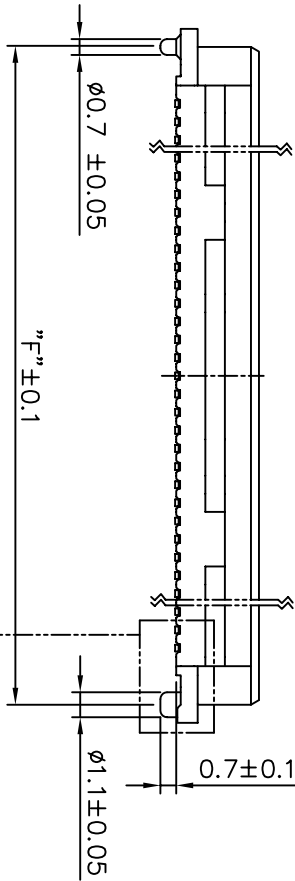
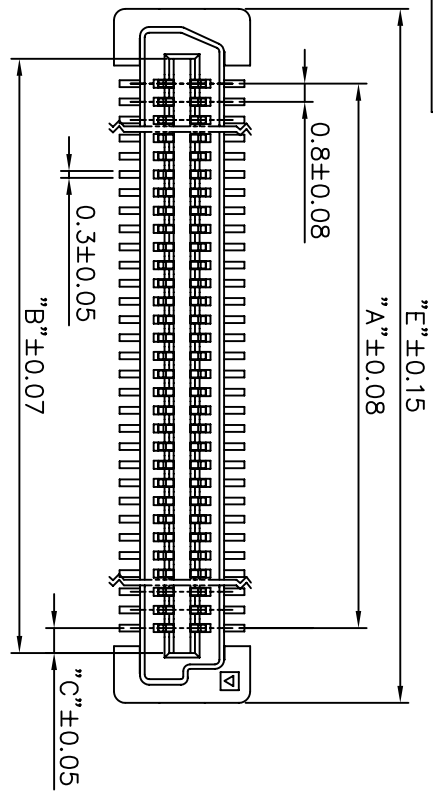


PRODUCT NO.  
73277-XX1XXXXXX



NOTE: RECOMMENDED TRANSITION BOARD THICKNESS IS 1.0 ± 0.05MM

mat'l. code	surface	tolerance	projection	product family
ISO 1302	ISO 406	ISO 1101	mm	BERGSTAK
ltr	ecdn no	dr	date	tolerance unless otherwise specified
G	T03-0103	MW	4/3/03	0.0 ± 0.38
H	T03-0214	MW	06/10/03	0.0 ± 0.25
J	T03-0379	MW	09/04/03	0.00 ± 0.15
K	T04-0094	MW	03/05/04	0.00 ± 0.15
L	S04-0133	MW	06/24/04	scale 1:1
M	S04-0251	CH	11/23/04	FCI
N	S06-0196	MC	07/04/06	type Product Customer Drawing
sheet	revision	N	L	sheet 1 of 2 size A4
index	sheet	1	2	



1 2 3 4 5 6

NUMBER OF POSITIONS	08	2 X 40	31.2	37.8	36.2	33.15	0.98
	10	2 X 50	39.2	45.8	44.2	41.4	1.1

73277 -



HOLD DOWN	0
NONE	0

NONE	BLACK, 16-659-012 OR 16-522-016
1	NATURAL, 16-522-015
LF (note 6)	BLACK, 16-659-012 OR 16-522-016 (For Lead Free Plating Option 4, 5 and 6)
11F (note 6)	NATURAL, 16-522-015 (For Lead Free Plating Option 4, 5 and 6)

PLATING

0	NICKEL UNDERPLATE OVERALL 1.27 um MIN, GOLD PLATED: 0.2 umMIN. ON CONTACT AREA
1	NICKEL UNDERPLATE OVERALL 1.27 um MIN, GOLD PLATED: 0.1 umMIN OVER PALLADIUM-NICKEL ALLOY :0.76umMIN ON CONTACT AREA
4	NICKEL UNDERPLATE OVERALL 1.27 um MIN, GOLD PLATED: 0.2 umMIN. ON CONTACT AREA SOLDER AREA PLATED PURE TIN 2.5um MIN.
5	NICKEL UNDERPLATE OVERALL 1.27 um MIN, GOLD PLATED: 0.38 umMIN ON CONTACT AREA SOLDER AREA PLATED PURE TIN 2.5um MIN.
6	NICKEL UNDERPLATE OVERALL 1.27 um MIN, GOLD PLATED: 0.1 umMIN OVER PALLADIUM-NICKEL ALLOY :0.76umMIN ON CONTACT AREA SOLDER AREA PLATED PURE TIN 2.5um MIN.

PACKAGING

0	STICK
1	TAPE & REEL WITHOUT CAP
2	TAPE & REEL WITH CAP
9	STICK WITH CAP
8	TAPE & REEL WITH KAPTON

NOTES:

- 1.MATERIAL  
HOUSING:G.F.LCP UL94V-0  
COLOR: AS TABLE SHOWN.  
TERMINAL:BERYLLIUM COPPER.
- 2.PLATING  
AS TABLE SHOWN.
- 3.PACKAGING  
SEE NO. GS-14-551 FOR PACKAGING SPECIFICATION.
- 4.SEE GS-12-148 FOR PRODUCT SPECIFICATION.
- 5.TAIL COPLANARITY  
DISTANCE BETWEEN TAIL LOWER SURFACE AND HOUSING:SEE FIG.1.  
COPLANARITY TO BE 0.1 MAX.
- 6 THIS PRODUCT MEETS EUROPEAN UNION DIRECTIVE AND OTHER COUNTRY REGULATIONS AS DESCRIBED IN GS-22-008
7. THE HOUSING WILL WITHSTAND EXPOSURE TO 260 °C FOR 10 SECS IN A CONNECTION, INFRA-RED OR VAPOR PHASE REFLOW OVEN

mat'l. code	ISO 1302	tolerance	ISO 406	ISO 1101	projection	product family
ltr	ecm no	dr	date	surface	tolerance unless otherwise specified	BERGSTAK
K	L	S06-0196	MC 07/04/06	angles	linear	0.8mm BOARD TO BOARD MOD. RECEPTACLE ASS'Y
				0°±2'	.00±0.15	sheet2 of 2 size
				dr	MAGGIE WU	73277
				engr	YU WEN CHU	A4
				chr	CHEN HONG	Product Customer Drawing
				pppd	NG JOEY	
sheet index	revision	sheet				